



Peak performance. **Stahlfolder TX 96.**



Maximum performance. Stahlfolder TX 96.

Our Stahlfolder® TX 96 folding system enables you to achieve the highest output with low machine speeds, thereby ensuring maximum process reliability. This is because the kinds of critical speeds at which faults are likely to occur in the folding process are not actually necessary to achieve output of over 18,000 sheets per hour when producing 16-page signatures in A4 format.

This innovative concept makes the Stahlfolder TX 96 folding system an absolute peak performance machine. The combination of oblong format processing and shingled folding pairs two methods of increasing performance in one machine. The result is optimum efficiency – a completely new level of performance in industrial signature folding.

This peak performance is easily accessible to you. This is because the machine configuration comprising two folding stations with six buckle plates and pre-assembled slitter shafts is optimally coordinated and designed for the highest productivity. The folding programs together with all fine adjustments and the Air Management settings can be saved and quickly called back up for repeat jobs.

The secret to the success of the Stahlfolder TX 96 is therefore increasing the performance while keeping the machine speed the same through shingled folding and oblong format processing. The Stahlfolder TX 96 can be operated by one person when combined with the palamides alpha 700 hd stack delivery and automatic stacking with the Polar Transomat. This is how your folding machine keeps up with the performance of your press. Guaranteed.

Leader in postpress. 10 clear benefits.*



heidelberg.com/tx96/efficiency

Productivity

Output of up to

60 million

folded sheets per year.

Maximum performance: reliable folding of more than 18,000 sheets per hour.

Oblong feeding and shingled folding for transporting **more sheets in the same time.**

Low machine speeds of **110 m/min** guarantee **top folding quality**, even with delicate papers.

Makeready

Quickly call up **standardized folding programs** from the memory or the Prinect workflow.

Save **Air Management** settings and load them again quickly for repeat jobs.

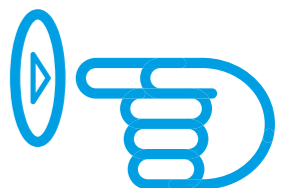
Perfectly coordinated folding system for **highly efficient signature production** in a U-shape for short walking distances.

Availability



Maximize availability with **Heidelberg Expert Support, Remote Diagnosis, and regular maintenance.**

User friendliness



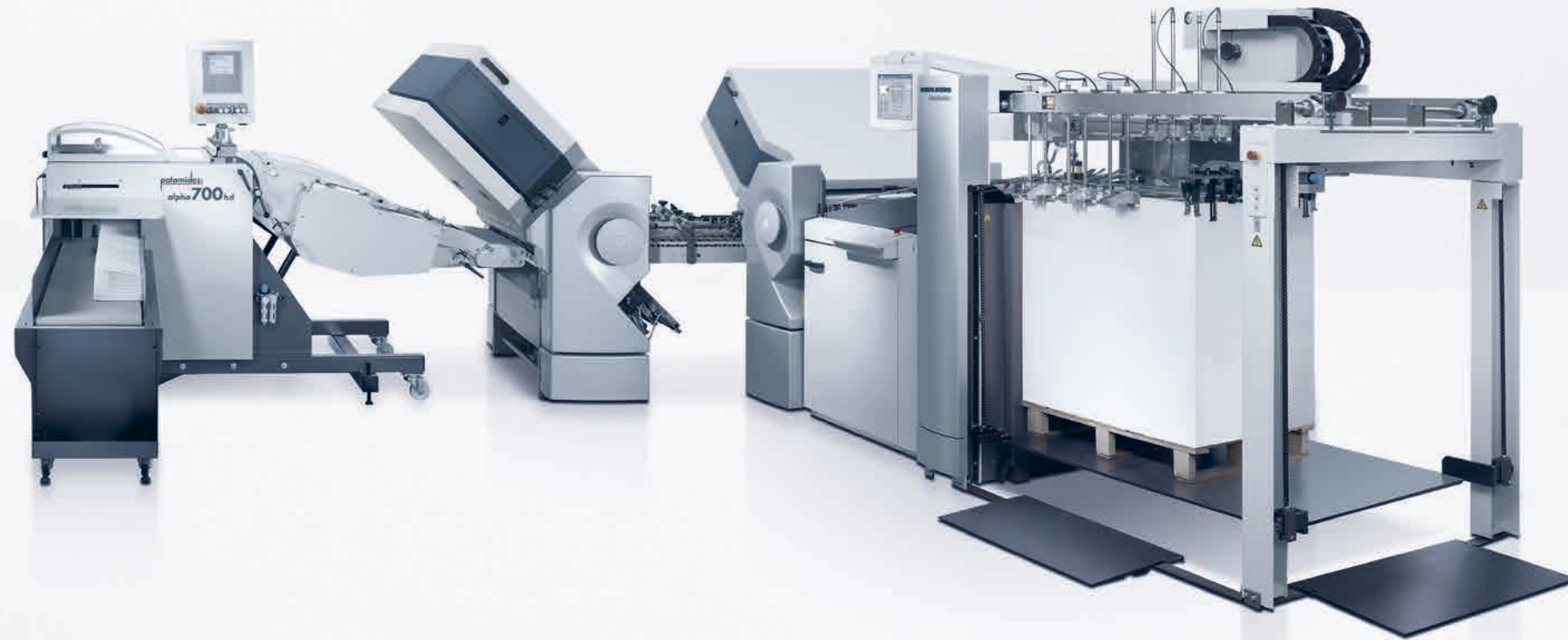
Reduced workload for the operator thanks to automatic stacking using the Polar Transomat.

Easy access to the slitter shafts and delivery thanks to a **45° undercarriage.**

* See reverse

Outstanding characteristics. The facts at a glance.

The fastest route to the finished product: the Stahlfolder TX 96 folding system will shorten your throughput times. Plan for top productivity – to match your press.



Equipment:

- PFX pallet feeder with shingled sheet feeding and two stage acceleration of the sheets
- Combination of oblong format processing and shingled folding: reducing the sheet infeed length enables more sheets to be transported over the same length
- New folding system in the first folding unit extends the field of application of shingled folding
- Splitting the stream of sheets using the twin-lay system module reduces the process speed and increases the folding quality in the second station also
- The palamides alpha 700 hd high-performance delivery and the Polar Transomat ensure mark-free delivery, even with the highest output

Highlights:

- Maximum productivity at reliable machine speeds of 110 meter per minute
- Cutting-edge economy: increased efficiency in industrialized signature production through shingled folding
- Uncompromising quality: production at low speeds guarantees consistently high-quality folded products
- Automatic stacking permits operation and unloading by just one person

→ You can find more about the details of the Stahlfolder TX 96 here: heidelberg.com/en/tx96



Technical support online: Remote Diagnosis.

- Troubleshooting and user support online at any time
- Transfer of machine data as preparation for on-site maintenance assignments
- Accelerated support = shorter downtimes, faster resumption of production

→ heidelberg.com/en/diagnosis



The perfect printing solution: Speedmaster equipment.

- Solutions for commercial printers, packaging printers, and specialists
- Preconfigured standard offset machines with attractive terms and conditions and fast delivery times
- Individually configurable machines
- Maximum productivity
- Consistent, simple operating concept
- Intelligent automation

→ heidelberg.com/en/equipment-speedmaster

This and all following information is dependent on the machine configuration, job structure, and organization of internal procedures. Some of the components mentioned are not included in the standard equipment.



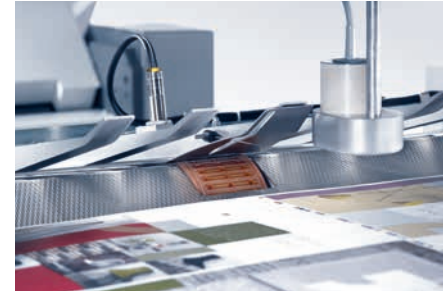
Mark-free delivery with the palamides alpha 700 hd stack delivery.



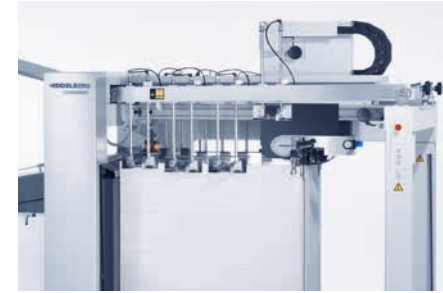
Division into two streams of sheets by the pneumatic twin-lay device.



Easy switching from sheet deflector to buckle plate with motor-controlled combination buckle plates.



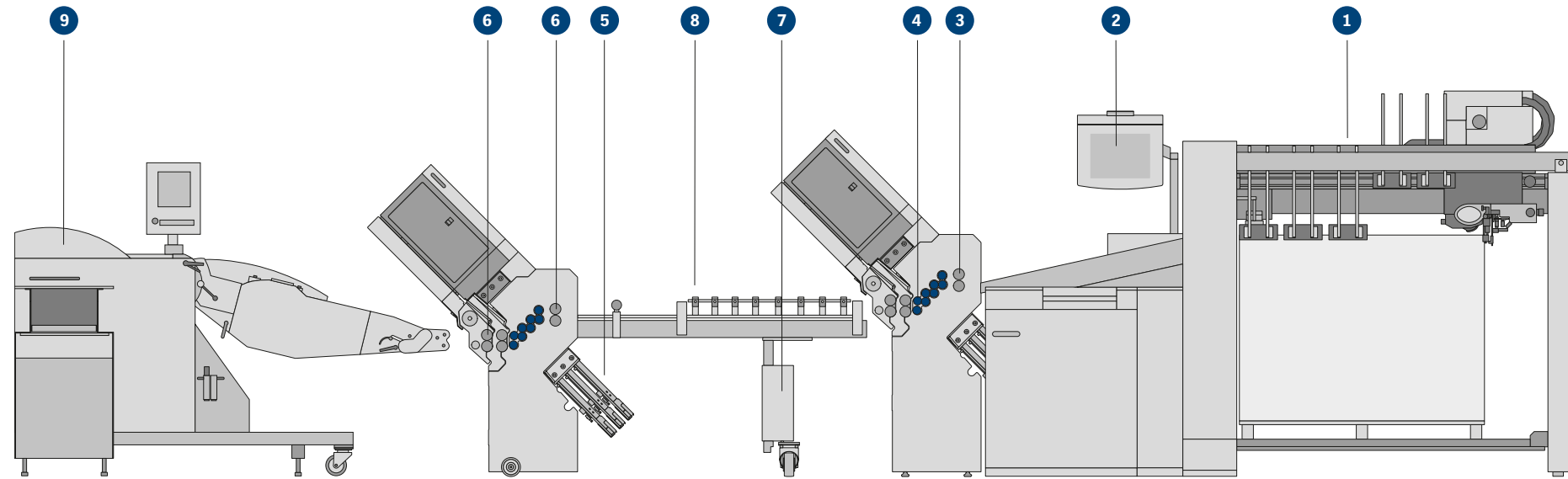
Lower suction wheel permits shingled sheet feeding.



Stable sheet feeding thanks to two stage acceleration with the PFX pallet feeder.



Automatic Air Management at the PFX feeder and AirstreamTable with memory function.



1 Feeder

The PFX pallet feeder speeds up the sheets in two stages and feeds them to the first folding unit in a shingled and perfectly aligned stream.

2 MCT modular control system

Easy operation of the machine via an intuitive touchscreen with animated graphics.

3 Folding units

Two folding units with six buckle plates offer a perfectly coordinated configuration for efficient processing of a variety of different signatures.

4 Folding rollers

ExtraGrip folding rollers with soft PU for slip-free and mark-free sheet transport.

5 Buckle plates

Precise positioning of the sheet stop via two motors and spindles permits automatic angle and deflector corrections with the motor-controlled combination buckle plates. The fine adjustments can be saved and quickly called up again.

6 Slitter shafts

Easy activation of the front-mounted and double rear-mounted slitter shafts as appropriate to the fold type.

7 45° undercarriage

Second folding unit mounted on rails for mobility ensures easy access to the slitter shafts and delivery.

8 Pneumatic twin-lay device

The pneumatic twin-lay device divides the sheets into two streams so that the high output can also be processed in the second station at low speeds.

9 Delivery

The palamides alpha 700 hd stack delivery ensures mark-free delivery and reduces the workload for the operator.

→ You can find more about the technical data for the Stahlfolder TX 96 here: heidelberg.com/tx96/technical-data

The machine shown is a sample configuration. Some of the equipment features mentioned are optional.

Heidelberger Druckmaschinen AG

Kurfuersten-Anlage 52 – 60

69115 Heidelberg

Germany

Phone +49 6221 92-00

Fax +49 6221 92-6999

heidelberg.com

Publishing Information

Printed in: 05/16

Photographs: Heidelberger Druckmaschinen AG

Platemaking: Suprasetter

Printing: Speedmaster

Finishing: Stahlfolder

Paper: Scheufelen BVS MATT

Consumables: Saphira

Fonts: Heidelberg Antiqua MI, Heidelberg Gothic MI

Printed in Germany

Trademarks

Heidelberg, the Heidelberg logotype, Prinect, Speedmaster and Stahlfolder are registered trademarks of Heidelberger Druckmaschinen AG in the U.S. and other countries. All other trademarks are property of their respective owners.

For details on the emissions of the Stahlfolder TX 96 folding system, please visit us at heidelberg.com/emissiondetails

Subject to technical modifications and other changes.

Liability for contents

The contents of this brochure have been prepared with great care. No warranty or liability is accepted for the correctness, completeness, or accuracy of the information. There is no guarantee that the customer will be able to achieve the values and numbers (e.g. relating to the function and performance of the machine) specified in the brochure. The information provided is based on ideal conditions and proper use of the machine. Achieving these values and numbers depends on a variety of factors and circumstances that are outside the control of Heidelberg (e.g. machine settings, technical conditions, ambient conditions, raw materials and supplies used, consumables used, standard of care and maintenance of the machine, expertise of the operator, etc.). They therefore constitute neither characteristics of the machine nor a guarantee. This brochure does not constitute a contractual offer and is solely for the purpose of providing (non-binding) information.

