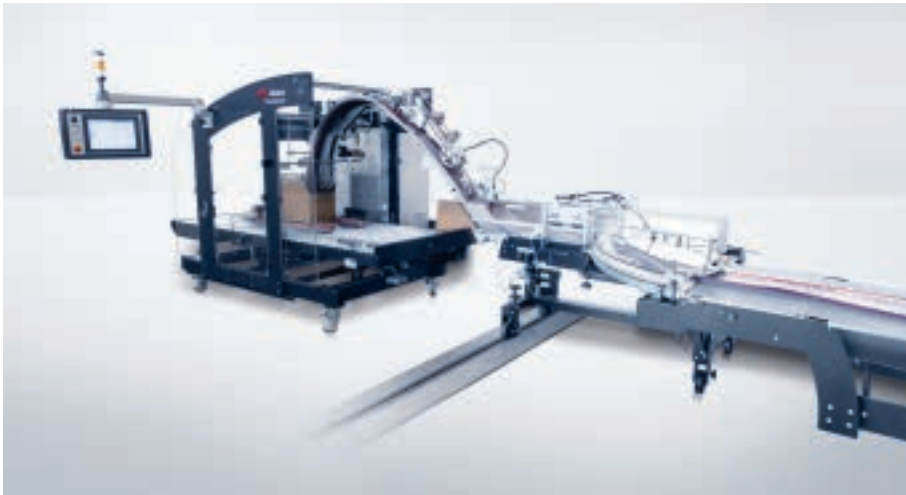


# Technical Information

## Diana Smartpacker



### Compact and powerful.

Thanks to its small footprint, compact design, and flexibility, the Diana Smartpacker not only integrates easily into any existing production environment and operating range, but is also compatible with folding carton gluers of other manufacturers.

With its automated solutions, the Diana Smartpacker is the most efficient packer in its category, with a packaging capacity of up to 130,000 cardboard boxes per hour. Thanks to automatic counting and filling of the cardboard boxes, your employees only have to process completely filled cardboard boxes. Compared to the Easypacker, the Diana Smartpacker has a higher degree of automation and makes packaging more attractive for companies of all sizes.

### Publishing information

Heidelberger Druckmaschinen AG  
Kurfuersten-Anlage 52-60  
69115 Heidelberg  
Germany  
Phone +49 6221 92-00  
Fax +49 6221 92-6999  
[contact@heidelberg.com](mailto:contact@heidelberg.com)  
Further details at:  
[heidelberg.com](http://heidelberg.com)

### Trademarks

Heidelberg, the Heidelberg logotype and Diana Smartpacker are registered trademarks of Heidelberger Druckmaschinen AG in the U.S. and other countries. All other trademarks are property of their respective owners.

For details on the emissions of the Diana Smartpacker, please visit us at [heidelberg.com/emissiondetails](http://heidelberg.com/emissiondetails)

**Version Nov 2022**



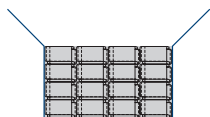
长荣股份  
MASTERWORK

# Specifications

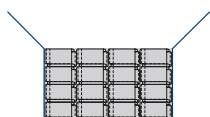
## Diana Smartpacker

### Packing pattern

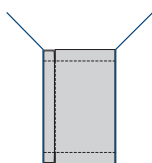
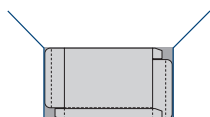
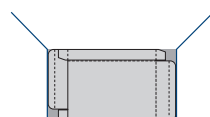
1–5 rows next to each other



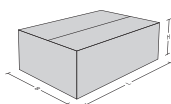
1–5 layers on top of each other,



on creasing rule 2 or 4 as well as on cover



### Folding cartons, Formats

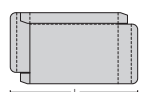


Length 300–700 mm

Width 130–550 mm

Height 55–400 mm

### Folding cartons, formats



Length 80–535 mm

Width 50/80–400 mm

Cardboard material 200–600 g/m<sup>2</sup>

### Technical machine data

Length 5.29 m

Width 2.60 m

Height 2.14 m

Net weight approx. 2,300 kg

Connected load approx. 9 kW