

Peak performance
in label printing.
Speedmaster XL 106.





Excellence in every respect. More than just a machine.

**The Speedmaster® XL 106 automates the production of sophisticated wet-glue or in-mould labels (IML).
The costs per sheet are lowered.**

Information provider, advertising medium and basis for innovative security features: Labels are increasingly becoming brand ambassadors. The Speedmaster XL 106 is our answer to an expanding market in which the enormous variety of products leads to short print runs and packaging forms must adhere to increased environmental awareness.

The new Peak Performance generation Speedmaster XL 106 significantly reduces the cost per sheet thanks to a wide range of innovations in speed, availability and quality. Modern machine control, new intelligent assistance systems and seamless networking with prepress create an extremely attractive working environment.

Set standards in wet glue or in-mould label production. Take advantage of trends such as the demand for cold transfer finishing or security features such as hidden images. Highly productive, the Speedmaster XL 106 delivers outstanding results despite frequent set-up and makeready processes.

Benefit from the many advantages of digitalization: In the pressroom, digitalization simplifies press control and operation. At a business level, it provides insights into the productivity of the Speedmaster XL 106 at all times.

When you choose HEIDELBERG®, you get more than just a press. You gain access to an ecosystem that offers you real added value – with service, consumables, digital services, software, cloud-based solutions, training and consulting, inventory management and logistics. We accompany you into the future.



 [heidelberg.com](https://www.heidelberg.com)

Best performance as standard. **Speedmaster XL 106.**

The market for labels is growing. The Speedmaster XL 106 is responding to this with customized innovations. Discover individual solutions – for greater quality and performance.

The Speedmaster XL 106 gives you the certainty of consistent results, even with challenging finished labels, thin substrates and innovative security features. Developed to fulfill your requirements, the new generation of the Speedmaster XL 106 also combines automation with precision. We offer you a coordinated portfolio for efficient production along the entire process chain.

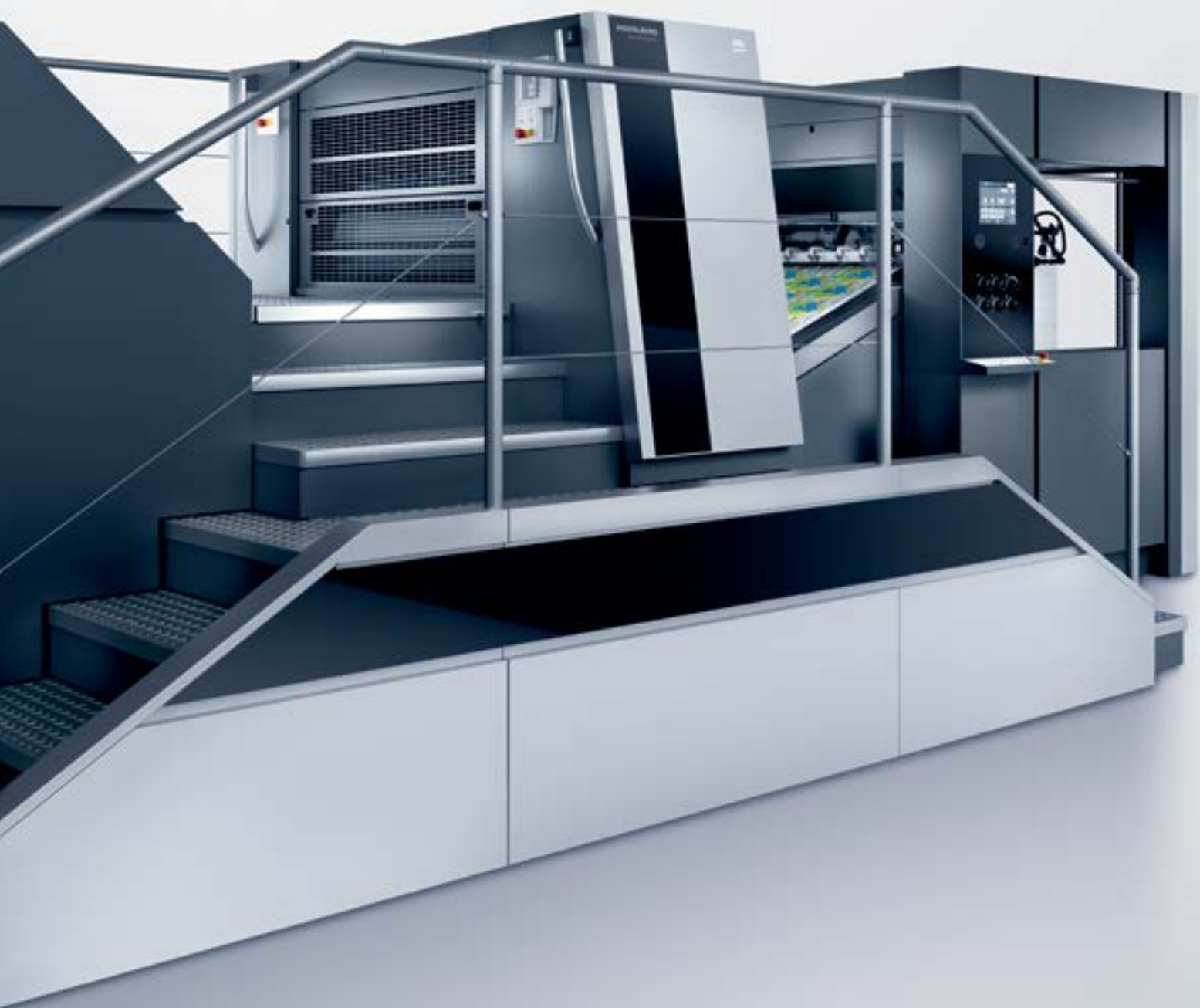
Wet-glue labels required in large print runs are very common in many label production environments. But even here, the market is characterized by increasing product diversity, resulting in frequent changes on the machine. Our answer: high production speeds of up to 21,000 sheets per hour with low waste. Thanks to artificial intelligence (AI) and digital assistants, the Speedmaster XL 106 reduces set-up and makeready times and therefore downtimes. Your efficiency increases, producing high quality at low cost per sheet.

In-mould labels place very specific demands on the printing process. The Speedmaster XL 106 offers you the special IML Performance Package 4.0, perfect for highly productive manufacturing of complex labels on film material. In conjunction with the CutStar® reel sheeter, even extremely thin films can be processed reliably.



→ heidelberg.com/en/xl106





At the highest level. Die-cut labels perfectly.

The Speedmaster XL 106-D/DD rotary die cutter makes fast finishing a reality. Ideal for the economical production of in-mould labels.

The Speedmaster XL 106-D/DD die-cuts complex and large labels from extremely thin material precisely and economically. Not only does the rotary die-cutter transfer the production speeds and quality of the Speedmaster presses to the finishing department, it can also be connected directly to the fourth-generation CutStar reel sheeter with integrated register cut for processing pre-printed rolls.

Choose between two variants. The compact Speedmaster XL 106-D single-unit die cutter boasts a small footprint and low investment costs. With the Speedmaster XL 106-DD twin-unit die cutter, you can integrate an additional work step inline: in the first unit, even small injection holes from five millimetres in diameter can be cut with high precision by means of a die on a magnetic cylinder. An additional extraction system reliably removes the die-cutting waste.

With the Speedmaster XL 106-D/DD, you benefit from maximum stability and cut quality. It is the combination of new optimized side walls, stiffer die-cutting cylinders, reinforced bearings and improved anti-static devices on the feeder and delivery that ensures optimized sheet travel and thus high production speeds of up to 10,000 sheets per hour.

Increase your overall process efficiency. At the delivery, an automatic tape inserter separates individual sheet packages in non-stop mode. The die-cutter increases the service life of plates and tools by up to 50 percent. Short set-up times of between 15 and 30 minutes reduce downtime. The result: high productivity and consistent quality, even with critical forms and materials.



→ heidelberg.com/en/xl106-dd



BERG

HEIDELBERG

OPERATIONAL
EFFICIENCY

Work with ease. Intuitive for the best results.

Intelligent automation reduces errors. But production processes do not work without operators. That's why we make sure that working on the press is intuitive and effortless.

Simple, fast and reliable: HEIDELBERG user experience.

Printing has never been so easy: assistance systems support and guide the operator through all the processes. The standardized and ergonomic user guidance makes even complex processes simple and enables maximum productivity in the long term.



Functions for simple and accelerated production:

Central control

Prinect Press Center XL 4 with Wallscreen XL

The modern 24-inch multi-touchscreen with intuitive controls allows you to monitor important presets and current production data. The Prinect Press Center® XL 4 also connects the Speedmaster XL 106 with the Prinect® workflow. The open interfaces allow the easy integration and use of third-party software at any time.



→ heidelberg.com/en/prinect-press-center-xl

Efficiency at a glance

Press Center Mobile and production screen

The flexible Press Center Mobile web application informs you in real time about the status of connected printing machines. It visualizes important production and process data as a basis for optimized processes – either on the mobile device or on the Speedmaster XL106 production screen.



→ heidelberg.com/en/press-center-mobile

Greater productivity thanks to digitalization

Intelligent assistance systems

Self-learning software systems optimize set-up and production processes. This increases efficiency and quality – quickly and autonomously.

Clear and transparent in real time

Intellistart® 3

The set-up operations required for pending jobs are automatically calculated, processed and displayed. Intellirun provides real-time information on production status and navigates the operator through the production process on the Wallscreen XL. The Intelliline LED system provides an up-to-date overview of the machine status through color-controlled LED elements on the units.

All-arounder meets quality

Hycolor Assistant

When the job is accepted, the assistance system recommends suitable settings for the Hycolor XL inking/dampening unit, which it calculates using artificial intelligence after analyzing the preview images of the print job. The first good sheet is achieved faster. The operator's workload is reduced.



Making brands shine. Labels for every need.

Labels fulfill numerous tasks. Our solutions for the Speedmaster XL 106 are just as versatile. Experience quality and performance for in-mould and wet-glue labels.

In-mould labels

Lightweight and thin materials place particular demands on statics and sheet travel. The Speedmaster XL 106 counters this with special equipment.



High performance for challenging materials IML Performance Package 4.0

Thanks to innovative components on the feeder and delivery, including supporting preset functions and optimized sheet travel, the Speedmaster XL 106 with IML Performance Package 4.0 effortlessly processes materials from a thickness of 40 µm.

Optimal drying

DryStar® Advanced dryers in Y-units

An extended drying section as well as hot air and infrared settings in one percent increments enable gentle processing of delicate materials and perfect register even with thin plastic films. Automation, preset functions and storable settings reduce set-up times.

Full drying control

DryStar monitor

Sensors for temperature, humidity and air volume, including data storage, data transfer to the PC, software program for evaluation and connection to printing machine's wallscreen, show the actual status of the dryers. The air volume of the exhaust air, the relative humidity (RH in %) and temperature of the supply and exhaust air as well as the absolute humidity (g H₂O/kg air) and the amount of extracted water in the exhaust air (kg/water/h) are displayed.

Wet glue labels

Thanks to its innovative components, reduced waste and production speeds of up to 21,000 sheets per hour, the Speedmaster XL 106 enables wet-glue labels to be produced economically.



Short set-up times and top speeds CutStar with DIS (digital infeed system)

With its innovative platform, the fourth-generation CutStar reel sheeter offers more automation, simple handling and easy maintenance. This makes it significantly more productive, especially when using films and thin materials. The feeder can be equipped with automatic DIS sheet alignment.

Simulation of spot colours

Prinect Multicolor Toolset

Spot color simulation using the four process colors as well as orange, green and violet reproduces a large color space and avoids color changes and wash times. This makes it possible to display different spot colors on one sheet. Using Print Color Management, the Multicolor workflow provides a standardized printing process with stable, reproducible quality.

Sustainable label production

DryStar Combination Eco

The energy-efficient dryer saves up to 30 percent energy thanks to optimized energy input, integrated heat recovery and thermal insulation. The high level of insulation reduces energy consumption during drying and minimizes heat loss. The pressroom heats up less. Less air conditioning is required. The workplace becomes more user-friendly.

SPEEDMASTE



Princt Press Center XL 4 connects the press with Princt – for color management with presets and current reports.



Princt Inspection Control 4 checks every sheet inline with high-resolution color cameras for errors before downstream costs are incurred.



DryStar LED Pro ensures economical label production and brilliant results with low energy consumption.

R XL 106



With up to six foil webs and indexing function, the **FoilStar® cold transfer module** delivers sustainable and metallic finishes.



AutoPlate Pro changes all printing plates fully automatically, staggered and time-optimized. Efficiency and productivity increase.



Antistatic equipment for metallized substrates and foils prevents the material from becoming charged.

8

Dryer systems

Optimum results and fast finishing thanks to the **extended drying section**.

In separate drying units, special **DryStar Advanced dryers** with ten drying zones ensure optimum and flexible drying of the IML labels. Alternatively, the drying section can be accommodated in an extended delivery, which is four times as long.



→ heidelberg.com/en/drystar

6

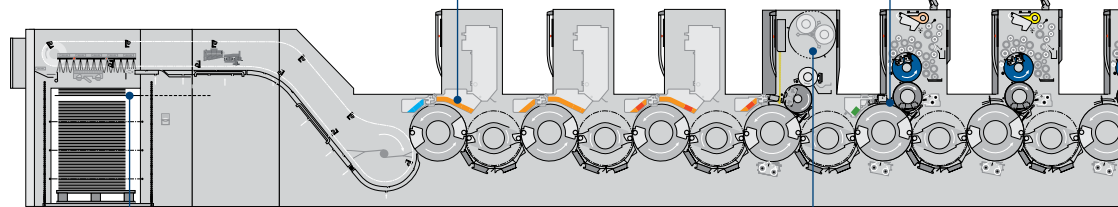
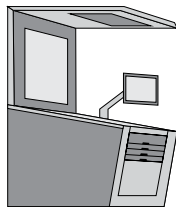
Prinect Inpress Control 3

High productivity thanks to monitoring during printing throughout the entire production process: The integrated spectral measurement system measures and controls color and register on the fly and at all speeds.

It finds print control strips, paper white and register marks fully automatically, shortens set-up times and starts ink control without operator intervention.



→ heidelberg.com/en/prinect-inpress-control



9

Non-stop delivery

The **fully automatic non-stop system** with hurdle device enables uninterrupted non-stop production and the flexible use of system and disposable pallets thanks to the movable belt table.

The automated hurdle mode ensures simple, reliable small pile production.

The **movable belt table system** ensures reliable pile separation and smooth, precise placement of the auxiliary pile.

7

Push to Stop coating unit

The new **coating unit** ensures high quality through simple operation and short set-up times. Anilox rollers with larger diameter and less weight are designed for maximum printing speeds.

Coating, anilox roller and coating plate changes can be performed with various levels of automation, including semi-/fully automatic coating plate changes with **AutoPlate Coating/Pro**, fully automatic anilox roller changes with **Autoloader** and automatic coating changes in the **Coating Center**.

In **Push to Stop** mode, the coating unit enables parallel changeovers without manual intervention, at the same time as other set-up processes and automatic cleaning functions.

4

IML Performance Package 4.0

Highly productive and economical: Reliable processing of thin IML films from a thickness of 40 µm thanks to preset functions and optimizations to the feeder/delivery and sheet travel.

In combination with the CutStar reel sheeter, **antistatic equipment for films and equipment for lightweight materials** make it possible to process challenging materials reliably. The components enable up to 2,000 sheets/h faster production of IML labels.

2

Preset Plus feeder

The components of the future-proof sheet feeder were designed with up to 40 percent increased fatigue strength. Service calls can be carried out in half the time thanks to the modular design. More productive time with adjustment-free pull lay and direct-drive feeder.

The new fully automatic **digital infeed system** sheet alignment with no mechanical side stops reduces interruptions at the feeder by up to 50 percent.

1

Fourth-generation CutStar

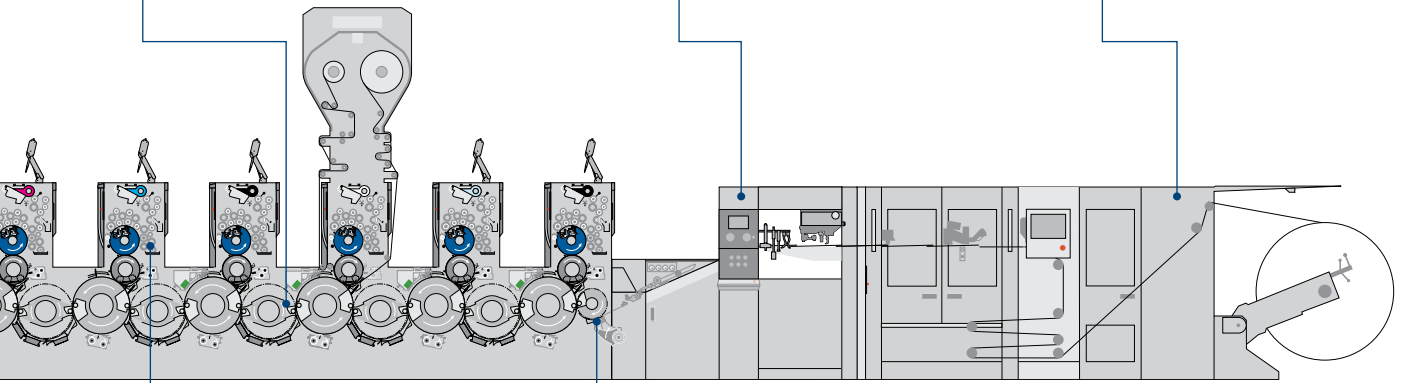
The **reel sheeter** is impressive, with even more automation as well as simple operation and maintenance.

The fourth-generation **CutStar** is the highly efficient solution for producing wet-glue and in-mould labels with short set-up times and high production speeds.

Cost-effective, competitive production thanks to reduced waste, optimized format and low prices for roll-fed stock.



→ heidelberg.com/en/cutstar



5

Hycolor Pro dampening unit

The dampening unit with **Hycolor Pro** offers transparency for dampening unit adjustment and, thanks to motorized remote adjustment, allows quick reactions during ongoing production.



→ heidelberg.com/en/hycolor-pro/experttalk

When the job is accepted, the AI-based **Hycolor Assistant** recommends suitable settings for the Hycolor XL inking/dampening unit after analyzing the preview images of the print job.

3

Equipment for lightweight materials

Optimized sheet travel prevents stretching and creasing of thin substrates across the entire machine: With the equipment for lightweight materials, grammages from 30 g/m² and films from 40 µm thick can be processed. The result is a higher production speed and consistently better quality.



Speedmaster XL 106

The printing machine shown is a sample configuration. Some of the equipment features presented are optional. Compare the Speedmaster XL 106 with other machines in this segment.

→ heidelberg.com/xl106/machine-comparison

You can find further information and technical details for your Speedmaster XL 106 here:

→ heidelberg.com/en/xl106

HEIDELBERG
Speedmaster

CO₂

Intelligence

AUTOMATION



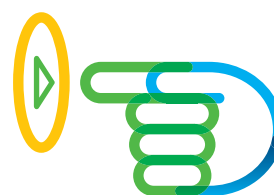
The art of efficiency.

With the focus on automation.

The Speedmaster XL 106 gives you a decisive competitive edge in label printing. Highly automated, it reduces process- and operator-related sources of error. They produce more efficiently and more cost-effectively with consistently high quality.

Efficiency at the touch of a button.

The intuitive operation of the highly automated processes delivers reliable performance in navigated printing. Employees are actively guided and their workload is lightened. Manual interventions are significantly reduced. Set-up and printing processes run at the touch of a button.



Functions for time- and cost-saving production:

Parallelism saves valuable time

Hycolor XL inking/dampening unit with Multidrive

With its intelligent ink distribution and further improved Vario system, the inking/dampening unit meets the highest demands in terms of quality and waste reduction when processing challenging jobs. The first good sheet is achieved quickly, and output and efficiency are increased. In combination with Multidrive, inking unit washup can be performed in parallel with other set-up processes. Set-up times are significantly reduced, especially with frequent color changes.

Fully automatic set-up without stopping

Prinect Inpress Control® 3

The spectral measurement system recognizes print control strips, paper white and register marks and starts ink control automatically. The color deviation ΔE is displayed and adjusted on the fly.



→ heidelberg.com/en/prinect-inpress-control

Perfect register made easy

Prinect APSC

The patented Prinect APSC (Automatic Paper Stretch Compensation) software prevents unwanted register deviations during the printing process, which can be caused by paper and substrate stretching. It calculates the expected paper stretch during printing and automatically compensates for the misregister with the plate exposure. The print image is clear and precise. Color shifts, long set-up times and high waste levels are eliminated.

Automatic error detection

Prinect Inspection Control 4

The inline sheet inspection system automatically detects printing errors and material defects with a high standard of inspection. It can be integrated into the waste paper management system and can be supplemented with the InsertStar® tape inserter and the waste paper ejection system.



→ heidelberg.com/en/prinect-inspection-control

Everything you need in one place. The HEIDELBERG ecosystem.

Remote Services

Enjoy the benefits of fast and remote problem solving, maintenance and analysis of machine performance.



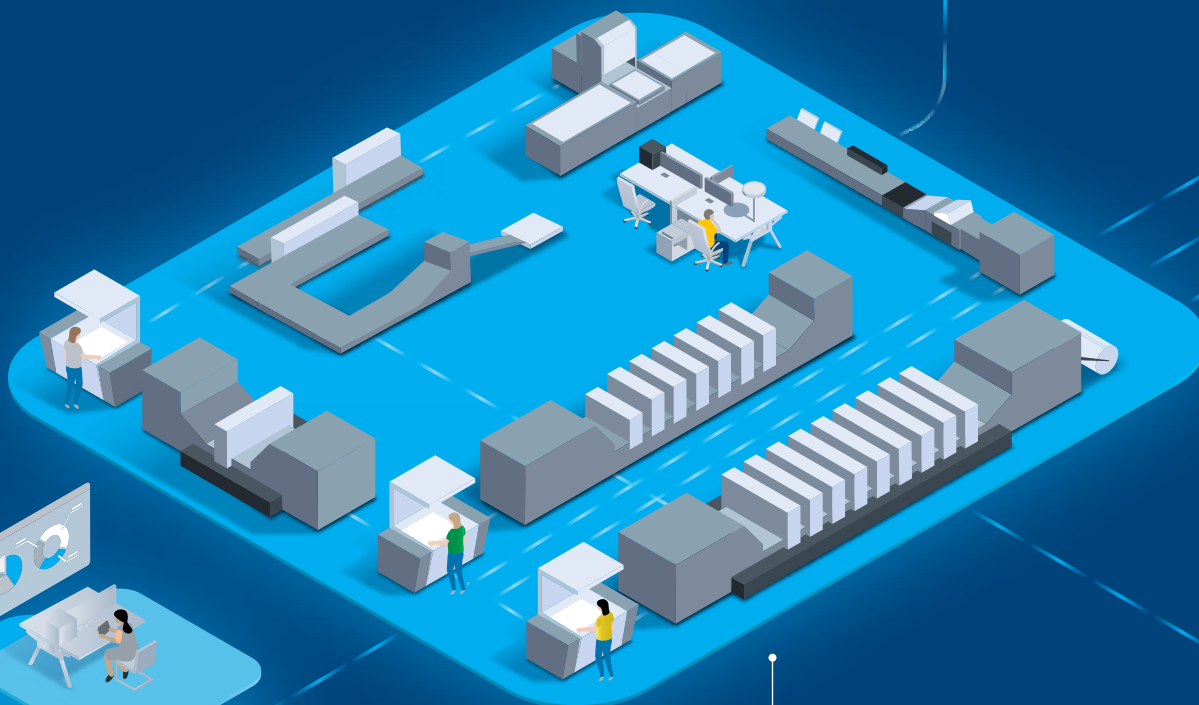
On-site services

From technical service to parts delivery: To ensure stability in your production, we provide 24/7 support worldwide.



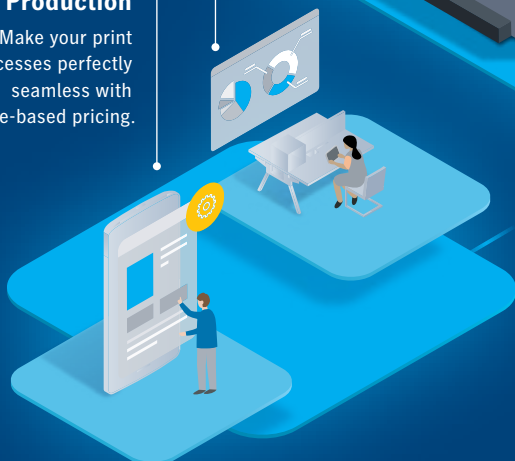
Prinect Business

Automate your commercial processes and see where you make or lose money.



Prinect Production

Make your print processes perfectly seamless with volume-based pricing.



End-to-end production workflow

Increase productivity with speed, quality, digital integration, and reliability.

Every print shop is different, and every customer has unique, comprehensive needs. That is why we have developed our offerings to serve these needs all across the spectrum. What makes us

unique is that you can find everything here that makes your print shop smarter, faster, and better. Make HEIDELBERG your one-stop shop for everything that contributes to your success.



The digital customer portal

Reach cloud-based production, shopping, support, reporting, and administration services from anywhere, at anytime.



Sustainable production

Go green and reduce waste and energy consumption with our sustainable solutions.



Saphira® Consumables

Use proven and tested consumables optimized for your HEIDELBERG equipment, including an eco-friendly product line.



The right investment

HEIDELBERG machines have a high resale value. If you invest in it today, it will pay off in the future.



Print Media Center Network

Experience our equipment running at three locations: Wiesloch-Walldorf (GER), Atlanta (USA), Shanghai (CHN).

Leading in the printing process. Clear advantages for you.

Sustainably effective

40,000
100–150
30–80 %
5 min

DryStar Combination Eco:
up to **40,000 kWh less energy consumption** per year

Prinect Inpress Control 3: **100 to 150 sheets less waste** thanks to spectral color measurement

FoilStar with indexing: **30% to 80% film savings** for printing forms with low area coverage

Prinect APSC: **5 minutes less set-up time and one less pull** thanks to automatic paper stretch compensation

Digital infeed system: **zero set-up** thanks to fully automatic sheet alignment at the feeder – **without pull lay**

21,000 sheets per hour:
16% higher maximum speed

Roll-fed vs. sheetfed stock: **30–50% faster production** thanks to the more stable sheet travel of roll-fed stock and up to **15% cost savings**

IML Performance Package 4.0: produce up to **2,000 sheets** per hour faster thanks to optimizations to the feeder, delivery and sheet travel

Automated and user-friendly

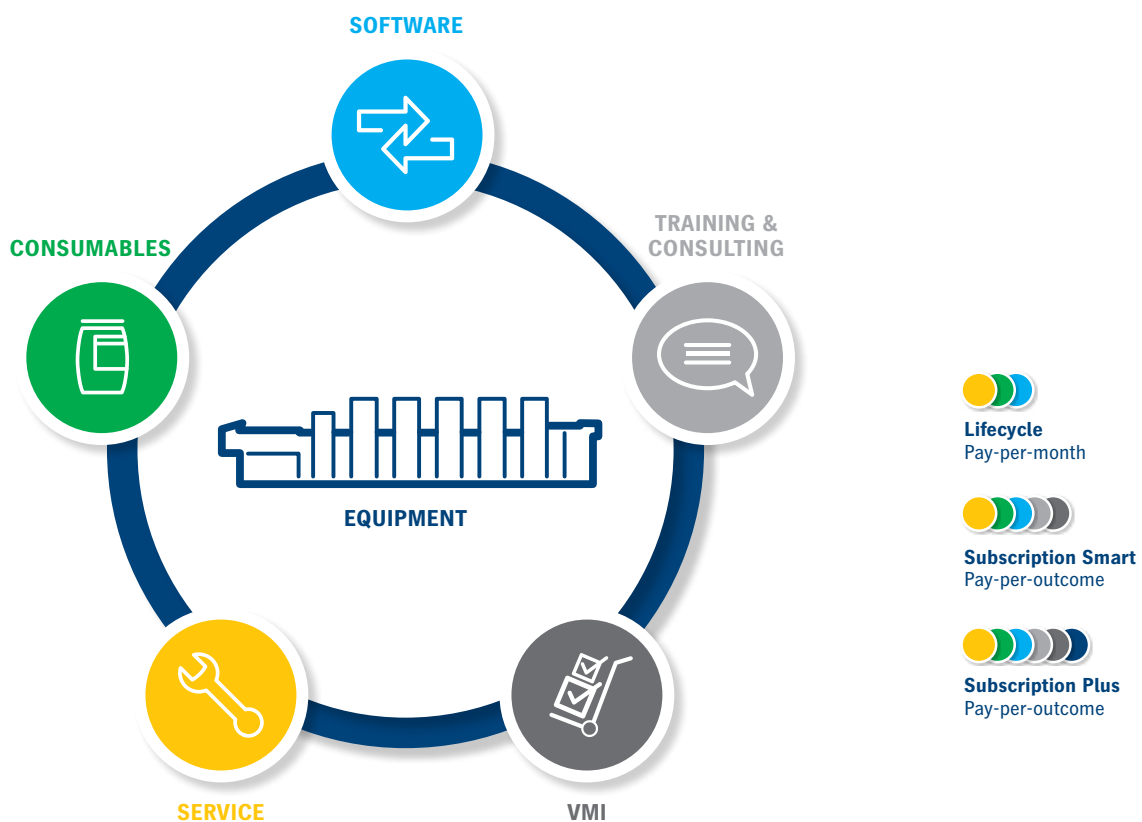
0 set-up
21,000
30–50 %
2,000 sph



HEIDELBERG Contracts.

Contract packages as individual as your requirements.

You benefit from a combination of best-in-class products from HEIDELBERG. Our Lifecycle and Subscription packages help you keep your machines running at their best.



Our contracts are scalable to your needs: We put together a lifecycle contract package for you from at least two of the three components – service, consumables and software. This offers you everything you need for reliable and stable printing production. The services are billed on a monthly basis. Subscription also includes training and consulting, Vendor Managed Inventory (VMI), and optional equipment. VMI automates the management of consumables. Thanks to the strong partnership with HEIDELBERG, you can enjoy the benefits of a comprehensive and optimized print production

system. With Subscription, payment is made per printed sheet.

The following applies to both packages: You reduce your process costs and gain more time for your customers.

Have we piqued your interest? Let us work together to create your customized solution package that best fits your needs.

➔ heidelberg.com/contracts



How can we help you? **Get in touch with us.**

We hope that this brochure will inspire you. There is more we can tell you about how we could make your printing business more efficient and profitable.

If you are interested in the **Speedmaster XL 106** or would like to learn more about what we can offer, feel free to contact us. We're only ever an e-mail or phone call away.

Reach us by email

→ contact@heidelberg.com

Use the contact form

→ heidelberg.com/info

Please find the phone numbers of your local sales organization here:

→ heidelberg.com/contact



Publishing information

Heidelberger Druckmaschinen AG
Kurfuersten-Anlage 52–60
69115 Heidelberg
Germany
Phone +49 6221 92-00
Fax +49 6221 92-6999
contact@heidelberg.com
Further details at:
heidelberg.com

Production note

Image credits: Heidelberger Druckmaschinen AG;
Shutterstock, Jacob Lund (23)
Platemaking: Suprasetter
Printing: Speedmaster
Finishing: Stahlfolder
Consumables: Saphira

Printed in Germany**Trademarks**

HEIDELBERG, the HEIDELBERG logotype, CutStar, Drystar, FoilStar, Inpress Control, InsertStar, Intellistart, Prinect, Prinect Press Center, Saphira, Speedmaster, Stahlfolder and Suprasetter are registered trademarks of Heidelberger Druckmaschinen AG in the U.S. and other countries. All other trademarks are property of their respective owners.

For details on the emissions of the Speedmaster XL 106, please visit us at [heidelberg.com/emissiondetails](https://www.heidelberg.com/emissiondetails)

Liability for contents

The contents of this brochure have been prepared with great care. No warranty or liability is accepted for the correctness, completeness, or accuracy of the information. There is no guarantee or warranty that the customer will be able to achieve the values and numbers (e. g. relating to the function and performance of the machine and the software) specified in the brochure. The information provided is based on ideal conditions and proper use of the machine and the software. Achieving these values and numbers depends on a variety of factors and circumstances that are outside the control of HEIDELBERG (e. g. machine settings, technical conditions, ambient conditions, raw materials and supplies used, consumables used, standard of care and maintenance of the machine, expertise of the operator, meeting the respective system requirements, etc.).

Version Mar 2024