

Perfect from all sides.  
**Speedmaster SX 102.**





# Partner in printing. Machine and more.

## **Speedmaster SX 102 – the perfecting press, which combines proven reliability with user-friendly daily operation.**

This versatile and economical machine is not only perfectly tailored to the needs of your customers, but – thanks to the technological innovations – it makes your business more prepared for a new digital future.

What's more, you benefit from all the advantages of digitalization. In the pressroom, digitalization simplifies the control and operation of the machines. It extends to the management level, where insight into the productivity of the press is possible at any time.

When you choose HEIDELBERG®, you buy more than just the press. You will have access to an entire ecosystem that offers you real added value, including service and consumables, software, digital services, cloud-based solutions, training and consulting, warehousing, and logistics. We accompany you into the future.

 [heidelberg.com](https://www.heidelberg.com)

# Built for perfecting. Speedmaster SX 102.

**The Speedmaster SX 102 is the perfect, future-proof investment with reliable perfecting in different formats, suitable for all kinds of commercial printers, publishers, and web-to-print print shops.**

Experience a high output in both straight printing and perfecting, combined with constant high quality on both sides.

Designed to meet your business needs – the scalability of the Speedmaster® SX 102 starts with a well-equipped machine and navigated printing leading up to the Push to Stop functionality with autonomous printing.

Custom order your machine to fit your business in terms of **performance, automation, and application**. From now on, you can choose between two maximum sheet size options at the Speedmaster SX 102: 720 × 1,020 mm (28.3 × 40.2 inches) or 650 × 940 mm (25.6 × 37 inches) which allows you to save up to 20 percent of plate costs.

Innovative technology to the core – with the implementation of artificial intelligence, you can discover a simple and efficient way of printing where digital assistants support operators by reducing manual interventions to a minimum. Plus, our intuitive user interface makes navigation easy, hence simplifying the production and training processes.

Our perfecting machine for your success – this intelligent interplay of automation components with the precision of our unique perfecting and sheet travel technology ensures consistent high quality on both sides, even with very thin substrates, and high output in both straight printing and perfecting.

 [heidelberg.com/sx102](https://heidelberg.com/sx102)





# OPERATIONAL

# Work with ease. Operation at its best.

**Intelligent automation is the key to reducing errors. At the same time, we know that human touchpoints cannot be eliminated completely from the processes. That's why we make sure that working on the press is a breeze.**

**Simple, fast, and reliable: HEIDELBERG User Experience.**

Printing has never been so easy with the holistic and intuitive operation of all HEIDELBERG touchpoints, where intelligent assistants and a uniform user interface work together to reduce complexity and streamline processes.



## These functions simplify and speed up operation and production:

### Control everything from one place

#### Prinect Press Center® XL 3 with Wallscreen XL

Important presettings and current production data are tracked on a state-of-the-art, 24-inch multi-touchscreen with intuitive controls.

Moreover, Prinect Press Center XL 3 connects the Speedmaster SX 102 with the print shop's Prinect® workflow.

➔ [heidelberg.com/prinect-press-center](https://heidelberg.com/prinect-press-center)

### Job changes in a blink of an eye

#### Intellistart® 3

The required makeready processes for all pending jobs are calculated, processed automatically, and shown.

### Digitalization for productivity

#### Intelligent assistant systems

Self-learning software systems optimize make-ready and production processes, resulting in an increase of both efficiency and quality – quickly and autonomously.

### Real-time dynamic information

#### Intellirun

Called the press navigator, Intellirun provides real-time information on the current production status and guides the operators through the production process on the Wallscreen XL. The Press Center Mobile web application expands the real-time information and displays it on mobile devices. The Production Screen also visualizes important production and process data on the move and in real time.

### Lights on for navigation

#### Intelliline

LED-based navigation support system, which provides a color visualization of the status of all printing units at all times.



3

CO<sub>2</sub>

Intelliline

AUTOMATION

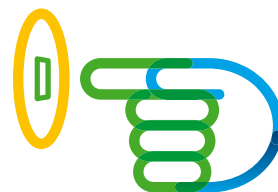


# The art of efficiency. Automation in focus.

**Speedmaster SX 102 gives you the decisive competitive edge. By combining a high level of automation with simultaneous reduction in process- and operator-related loss sources, sheets can be produced more efficiently with consistent high quality at lower cost.**

## **We call this “Push to Stop”.**

Processes are no longer actively started, only stopped when necessary. The press operates autonomously, manual interventions are reduced to a minimum, and makeready and printing processes run automatically without interruption.



## **These automated functions save you time and reduce waste:**

### **Automatically more productivity**

#### **AutoPlate Pro**

The fully automatic system changes the printing plate independently – staggered and time-optimized. This enhances efficiency and productivity as the operator is free for other tasks.

### **Wash smarter**

#### **Washup devices**

Automated and preset washing programs for blanket cylinder combine short washing times with outstanding washup results. These include the program-controlled washup devices where all preset programs are optimized for the best results, and the intelligent Wash Assistant that automatically chooses the right washing program based on the level of soiling.

### **Smooth processes**

#### **Intelligent assistants**

The combination of self-learning systems continuously optimizes makeready and production processes utilizing AI to reduce manual work. This includes Intellistart 3, the intelligent Wash Assistant, Powder Assistant, and the Color Assistant Pro.

### **Perfect colors with Prinect**

#### **Prinect color measurement systems**

From Prinect Easy Control up to Prinect Inpress Control, the spectral measuring technology developed by HEIDELBERG operates with extremely high precision, allowing the ink control system to reproducibly correct even the smallest deviations.

→ [heidelberg.com/print-color-measurement](https://heidelberg.com/print-color-measurement)

### **Stepping up setups**

#### **Prinect Inpress Control 3**

This innovative spectral measurement system detects the print control strips, the paper white, and the register marks, and automatically starts ink control on the fly and at all speeds without further intervention from the operator, resulting in shorter setup times and higher productivity.

→ [heidelberg.com/inpress-control](https://heidelberg.com/inpress-control)

# SPEEDMASTER



**Contact-free sheet travel** with Venturi nozzles and reliable guidance in the delivery ensure outstanding print quality.



**Prinect Inpress Control® 3** spectrophotometrically measures and controls the color as well as the register inline during production.



**Perfecting device** enables reliable and economical high-quality one pass production.

# R SX 102



**AutoPlate Pro** allows fully automatic, operator-independent, staggered plate changes in a short time.



**Intelligent new design solutions** provide easy access and overview with Intelliline and improved operator ergonomics without any need for additional space.



**CutStar® sheeter** combines the lower roll paper costs with the flexibility of sheetfed offset.

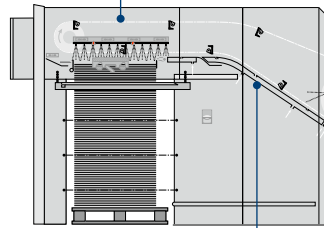
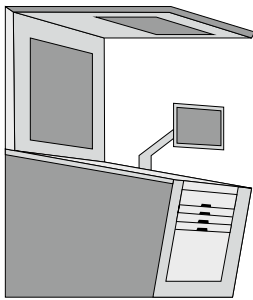
# 9

## Preset Plus Delivery

Our **high-performance delivery system** with material-specific presettings ensures piles with neatly aligned edges.

**Dynamic sheet brake** is set to automatically decelerate the sheet in a safe and controlled manner.

**Non-stop delivery** rack or board and lowerable auxiliary stack provides waste and time savings through pile changes during ongoing production.

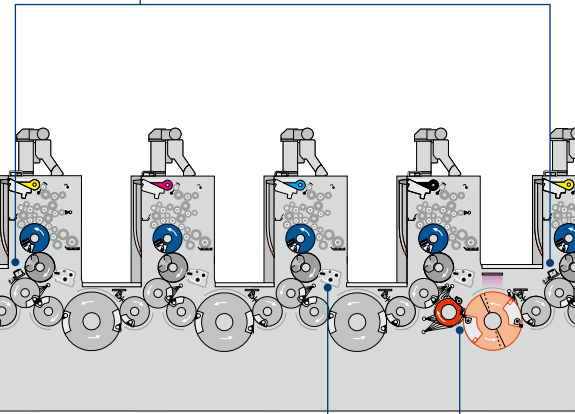


# 7

## Prinect Inpress Control 3

Providing high productivity through makeready and print run monitoring for all production: the integrated color measurement system automatically measures and controls color and register on the fly and at all speeds.

→ [heidelberg.com/inpress-control](https://www.heidelberg.com/inpress-control)



# 8

## Sheet travel/dryers

Perfect **sheet guiding** stabilizes thin materials along the ideal sheet path.

The **sheet guide system** with Venturi nozzles ensures contact-free and stable sheet transport for a neatly aligned pile.

The **UV dryer** technology combines bright results with the shortest drying time to ensure fast finishing processes.

# 6

## Washup devices

The **washing programs for blanket cylinder** offer short washing times with impeccable washup results.

Based on the level of soiling, the intelligent **Wash Assistant** automatically chooses the optimal washing program.

# 4

## Inking and dampening unit

The **Alcolor®** film dampening unit with Vario function ensures a stable ink-water balance and prevents hiccups, hence providing outstanding production stability.

The **inking unit** with high storage capacity allows stable inking through the entire production run, and the lined ink fountain makes cleaning quick and easy.

**InkStar®** ensures automatic filling of the ink fountains.

**Color Assistant Pro** enables fully automatic, continuous optimization of ink presetting and absolutely precise ink metering.

# 2

## Preset Plus Feeder

**High-performance feeder** with fully automatic presettings for all relevant format and air settings, for extremely short makeready times and steady sheet travel.

Intuitive and ergonomic operation of feeder and machine functions due to the **control panel with touchscreen**.

# 1

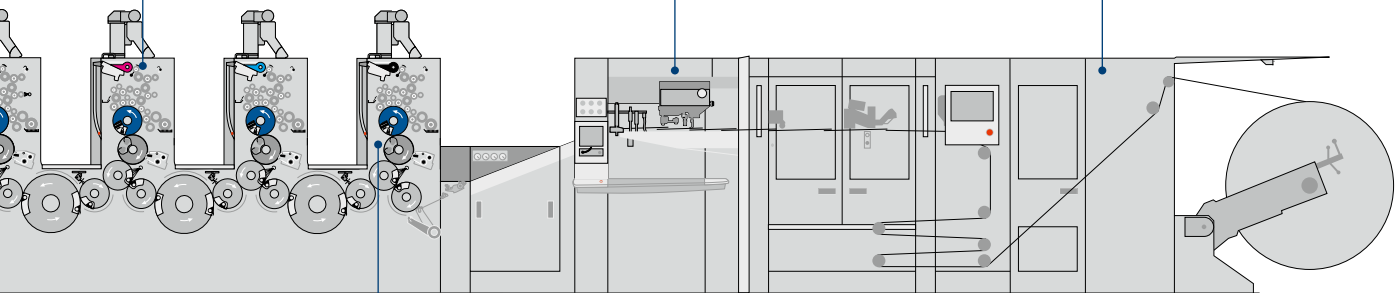
## CutStar

More automation, simple handling, and ease of maintenance are achieved in the fourth generation CutStar wide web sheeter platform.

Highly efficient solution for standardized and industrial commercial jobs with short makeready times and high printing speed.

Cost-effective and competitive production through waste reduction, the optimal format, and lower roll paper prices.

➔ [heidelberg.com/cutstar](https://heidelberg.com/cutstar)



# 5

## Perfecting device and sheet travel

The **perfecting device** provides register accuracy during the perfecting process and ensures scratch-free, markless sheet travel.

Our **perfect sheet guiding** stabilizes in particular thin printing materials along the complete sheet path.

**PerfectJacket®** stands for consistently high print quality on both sides. The special surface seal reduces the amount of cleaning required.

# 3

## Printing unit

Designed for productivity and reliability. Reduced maintenance thanks to cylinder surfaces with high-quality finish and gripper systems. Central remote register adjustment reduces makeready times.

The available **format option 92** saves up to 20 percent plate costs.

**AutoPlate Pro** enables fully automatic, sequential plate change.



## Speedmaster SX 102-8-P with CutStar.

The press shown represents a sample configuration. Some of the equipment features mentioned are optional. Compare the Speedmaster SX 102 with other machines in the same product range.

➔ [heidelberg.com/sx102/machine-comparison](https://heidelberg.com/sx102/machine-comparison)

You can find more information and technical details about your Speedmaster SX 102 here:

➔ [heidelberg.com/sx102](https://heidelberg.com/sx102)

# Your press, your needs. Solutions for commercial.

**To this day, quality commercial printing solutions remain popular and are sought-after worldwide.**

Brochures, manuals, or business stationery are all produced mainly using offset printing, which is more economical for longer runs. That is where the Speedmaster SX 102 comes into the picture.

Whether you produce 4/4 signatures in one pass or pharmaceutical package inserts on very thin grammages, the Speedmaster SX 102 is the perfect choice for your commercial business.

May it be the machines, the required consumables to match the application, or our application know-how itself, as the leading supplier in the printing industry, HEIDELBERG – with its continuous innovations – provides all-round solutions throughout the production process, from the start to the finished product.

→ [heidelberg.com/commercial](https://heidelberg.com/commercial)



**Jik Zheng**  
Production Manager  
Speedmaster SX 102



**Team Members**  
Speedmaster SX 102  
development project



**Raphael Schön**  
Assembly Manager

“ The Speedmaster SX 102 combines modern design with advanced user ergonomics and automation. Along with reliable perfecting, it brings commercial printing to a new level.

**JUDY ZHOU**

Senior Engineer Mechanical Design  
Heidelberg Graphic Equipment (Shanghai) Co., Ltd.  
China

**TOMMY MANNEWITZ**

Manager Mechanical Design  
Heidelberg Graphic Equipment (Shanghai) Co., Ltd.  
China



Discover what our customers say.

→ [heidelberg.com/  
medialibrary](https://heidelberg.com/medialibrary)

# Everything you need in one place. The HEIDELBERG ecosystem.

## Remote Services

Enjoy the benefits of fast and remote problem solving, maintenance and analysis of machine performance.



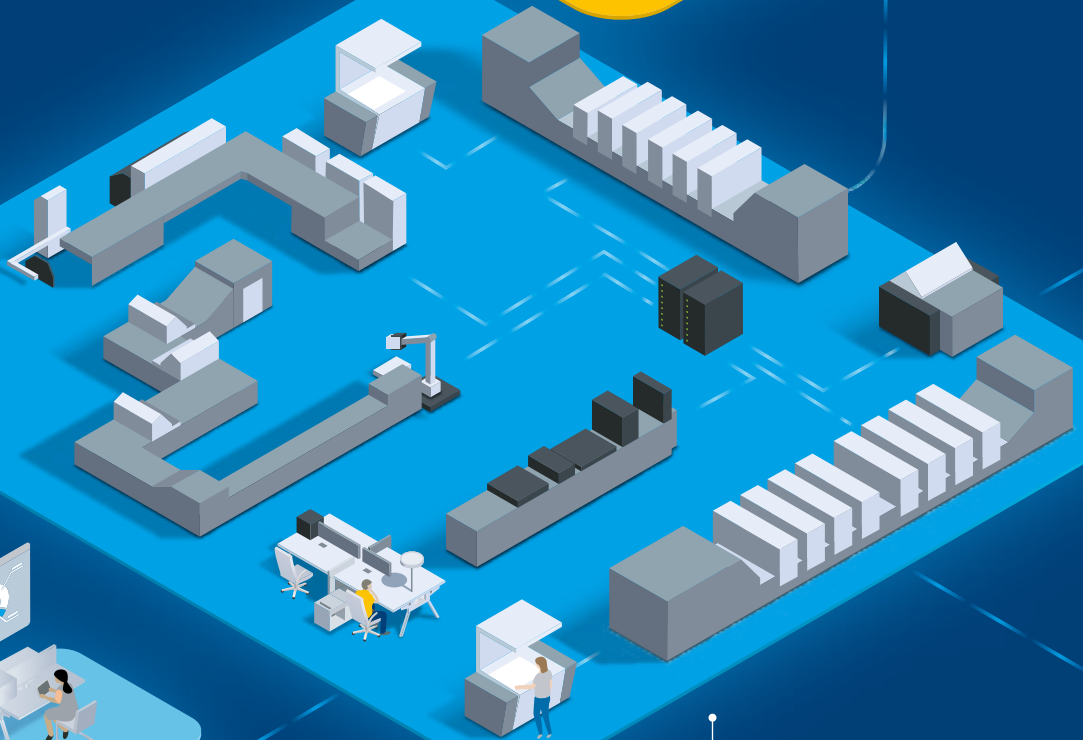
## On-site services

From technical service to parts delivery: To ensure stability in your production, we provide 24/7 support worldwide.



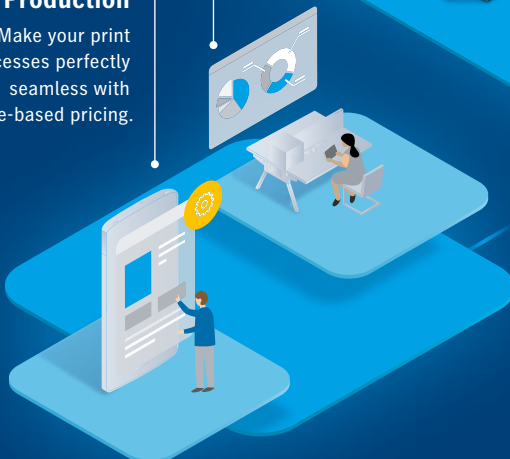
## Prinect Business

Automate your commercial processes and see where you make or lose money.



## Prinect Production

Make your print processes perfectly seamless with volume-based pricing.



## End-to-end production workflow

Increase productivity with speed, quality, digital integration, and reliability.



Every print shop is different, and every customer has unique, comprehensive needs. That is why we have developed our offerings to serve these needs all across the spectrum. What makes us

unique is that you can find everything here that makes your print shop smarter, faster, and better. Make HEIDELBERG your one-stop shop for everything that contributes to your success.



### The digital customer portal

Reach cloud-based production, shopping, support, reporting, and administration services from anywhere, at anytime.



### Sustainable production

Go green and reduce waste and energy consumption with our sustainable solutions.



### Saphira® Consumables

Use proven and tested consumables optimized for your HEIDELBERG equipment, including an eco-friendly product line.



### The right investment

HEIDELBERG machines have a high resale value. If you invest in it today, it will pay off in the future.



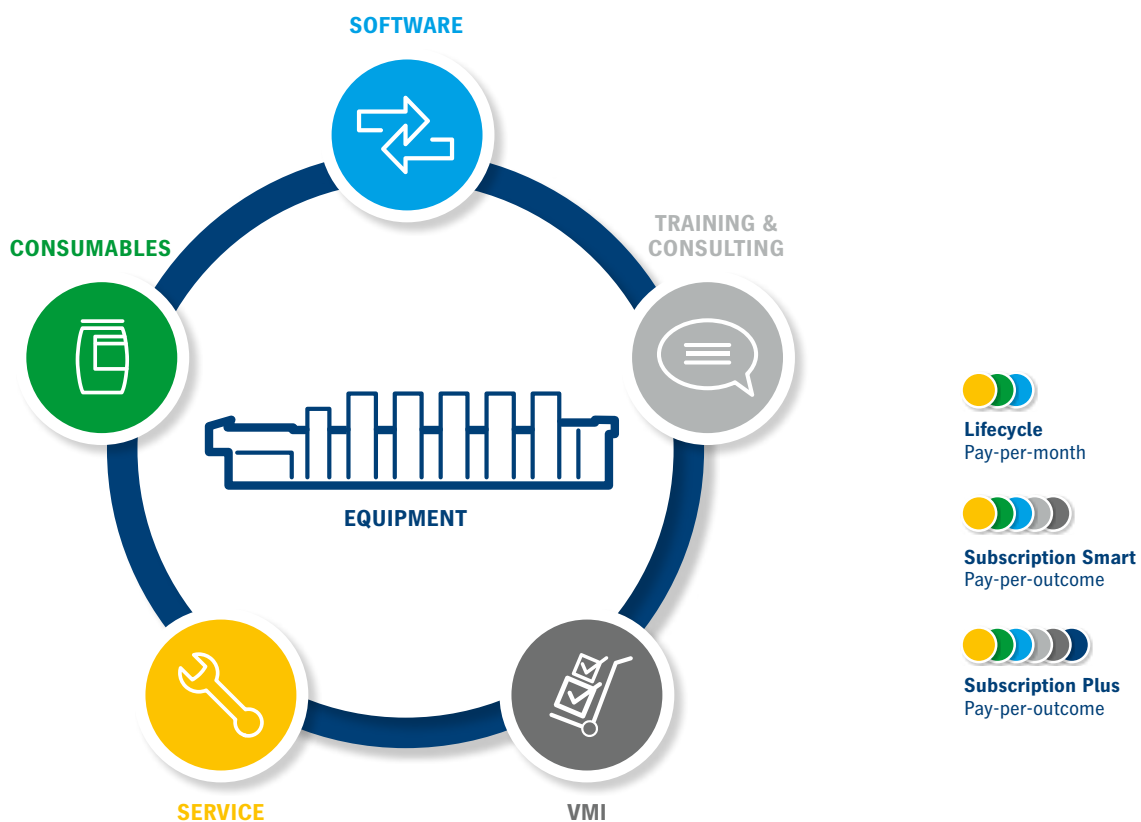
### Print Media Center Network

Experience our equipment running at three locations: Wiesloch-Walldorf (GER), Atlanta (USA), Shanghai (CHN).

# HEIDELBERG Contracts.

## Contract packages as individual as your requirements.

You benefit from a combination of best-in-class products from HEIDELBERG. Our Lifecycle and Subscription packages help you keep your machines running at their best.



Our contracts are scalable to your needs: We put together a lifecycle contract package for you from at least two of the three components – service, consumables and software. This offers you everything you need for reliable and stable printing production. The services are billed on a monthly basis. Subscription also includes training and consulting, Vendor Managed Inventory (VMI), and optional equipment. VMI automates the management of consumables. Thanks to the strong partnership with HEIDELBERG, you can enjoy the benefits of a comprehensive and optimized print production

system. With Subscription, payment is made per printed sheet.

The following applies to both packages: You reduce your process costs and gain more time for your customers.

**Have we piqued your interest?** Let us work together to create your customized solution package that best fits your needs.

➔ [heidelberg.com/contracts](https://heidelberg.com/contracts)



## How can we help you? Get in touch with us.

We hope that this brochure will inspire you. There is more we can tell you about how we could make your printing business more efficient and profitable.

If you are interested in the **Speedmaster SX 102** or would like to learn more about what we can offer, feel free to contact us. We're only ever an e-mail or phone call away.

Reach us by email

→ [contact@heidelberg.com](mailto:contact@heidelberg.com)

Use the contact form

→ [heidelberg.com/info](https://heidelberg.com/info)

Please find the phone numbers of your local sales organization here:

→ [heidelberg.com/contact](https://heidelberg.com/contact)



**Publishing information**

Heidelberger Druckmaschinen AG  
Kurfuersten-Anlage 52 – 60  
69115 Heidelberg  
Germany  
Phone +49 6221 92-00  
Fax +49 6221 92-6999  
contact@heidelberg.com  
Further details at:  
heidelberg.com

**Production note**

Image credits: Heidelberger Druckmaschinen AG;  
Shutterstock, Jacob Lund (19)  
Platemaking: Suprasetter  
Printing: Speedmaster  
Finishing: Stahlfolder  
Consumables: Saphira

**Printed in Germany****Trademarks**

HEIDELBERG, the HEIDELBERG logotype, Alcolor, CutStar, InkStar, Inpress Control, Intellistart, PerfectJacket, Prinect, Prinect Press Center, Saphira, Speedmaster, Stahlfolder and Suprasetter are registered trademarks of Heidelberger Druckmaschinen AG in the U.S. and other countries. All other trademarks are property of their respective owners.

For details on the emissions of the Speedmaster SX 102, please visit us at [heidelberg.com/emissiondetails](https://www.heidelberg.com/emissiondetails)

**Liability for contents**

The contents of this brochure have been prepared with great care. No warranty or liability is accepted for the correctness, completeness, or accuracy of the information. There is no guarantee or warranty that the customer will be able to achieve the values and numbers (e. g. relating to the function and performance of the machine and the software) specified in the brochure. The information provided is based on ideal conditions and proper use of the machine and the software. Achieving these values and numbers depends on a variety of factors and circumstances that are outside the control of HEIDELBERG (e. g. machine settings, technical conditions, ambient conditions, raw materials and supplies used, consumables used, standard of care and maintenance of the machine, expertise of the operator, meeting the respective system requirements, etc.).

**Version Mar 2024**