

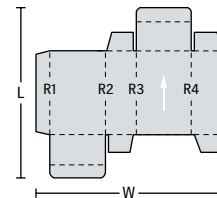
Folding Carton Models

Diana X 115

1. Straightline folding cartons

W	75–1,150 mm (2.95–45.28 in)
Optional	45*–1,150 mm (1.77–45.28 in)
<hr/>	
L (max.)	900 mm (35.43 in)

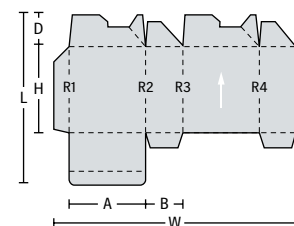
Machine speed	500 m/min (1,640 ft 5 in/min.)
Optional	650 m/min (2,132 ft 7 in/min.)
<hr/>	
* with miniature carton attachment	



2. Lockbottom cartons

W	146*–1,143 mm (5.75–45.00 in)
L (max.)	1,100 mm (43.31 in)
D	30–200 mm (1.18–7.87 in)
H (min.)	50 mm (1.97 in)

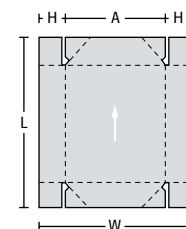
A (min.)*	40 mm/1.57 in (35 mm/1.38 in)
B (min.)*	30 mm/1.18 in (35 mm/1.38 in)
Output (max.)	50,000 pcs/h
<hr/>	
* with miniature lockbottom unit	



3. 4-corner collapsible boxes

W	120–1,150 mm/4.72–45.28 in (Version CC)
L	110–1,100 mm/4.33–43.31 in (Version CC)
A	80–900 mm (3.15–35.43 in)

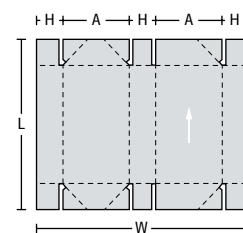
H	20–200 mm (0.79–7.87 in) *20–100 mm (0.79–3.94 in)
Output (max.)	40,000 pcs/h *45,000 pcs/h
<hr/>	
* 3-angle backfolding hook option	



4. 6-corner collapsible boxes

W	250–1,150 mm/9.84–45.28 in (Version CC) 270–1,150 mm/10.63–45.28 in (Version C)
L	130–1,100 mm/5.12–43.31 in (Version CC) 130–830 mm/5.12–32.68 in (Version C)
A (min.)	80 mm (3.15 in)

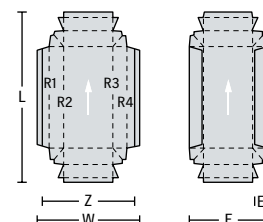
H	30–165 mm (1.18–6.50 in) *30–100 mm (1.18–3.94 in)
Output (max.)	35,000 pcs/h *40,000 pcs/h
<hr/>	
* 3-angle backfolding hook option	



5. Double-wall cartons

W	90–900 mm (3.54–35.43 in)
L	120–900 mm (4.72–35.43 in)
Z (min.)	105 mm (4.13 in)

W (max.)	1,150 mm (45.28 in)
E (min.)	15 mm (0.59 in)
Machine speed	300 m/min* (984 ft 3 in/min.)
<hr/>	
* with disc-type upper gluing unit	



Diana X 80 Diana X 115

HEIDELBERG

Two machines, one goal – professional high-quality production.

The Diana® X 80 and Diana® X 115 are high-performance folding carton gluing machines with numerous highlights that have a direct impact on optimizing your production operations. Their modular design paves the way for flexible machine configurations that deliver the quality and high performance levels needed for a wide range of applications. The Diana Braille module, for example, is ideal for braille applications, while the Diana Inspection Control module ensures reliable and monitored production quality. As a result, you are well equipped to meet the needs of a demanding market.

Diana X 80. The Diana X 80 from Heidelberg® is a compact machine model with a narrower working width that is ideal for pharmaceutical packaging and packaging that needs to exude quality. Its modular design makes it highly flexible and capable of tackling all manner of tasks.

Diana X 115. The Diana X 115 also comes with a large number of different modules to maximize your flexibility. It can therefore cover a wide-ranging production spectrum and satisfy the toughest requirements in terms of quality and productivity.

The Diana X 80 and Diana X 115 have the flexibility needed to produce a wide range of cartons. The results are equally impressive for standard everyday items and high-finish packaging.

Heidelberg Druckmaschinen AG

Kurfuersten-Anlage 52–60
69115 Heidelberg • Germany
Phone +49 6221 92-00
Fax +49 6221 92-6999
www.heidelberg.com

Trademarks

Heidelberg, the Heidelberg logotype and Diana are registered trademarks of Heidelberg Druckmaschinen AG in the U.S. and other countries. All other trademarks are property of their respective owners.

For details on emissions for the Diana X 80 and Diana X 115, please visit us at www.heidelberg.com/emissiondetails

Subject to technical modifications and other changes.



Technical Details

Diana X 80 and Diana X 115

Diana X 80

Carton material	Folding boxboard (gsm)	Corrugated board
Straightline folding cartons	200-900	N/F/E/B flute
Lockbottom cartons	250-900	N/F/E/B flute
Collapsible boxes	250-900	N/F/E/B flute
Double-wall cartons	250-900	N/F/E/B flute

Space requirements (Version A/B/C)		
Length	16.2 m/18 m/19 m (53 ft 2 in/59 ft 1 in/62 ft 4 in)	
Width	1.9 m/1.9 m/2.45 m (6 ft 3 in/6 ft 3 in/8 ft 0 in)	
Installed power	50 kVA/50 kVA/55 kVA	

Diana X 115

Carton material	Folding boxboard (gsm)	Corrugated board
Straightline folding cartons	200-900	N/F/E/B flute
Lockbottom cartons	250-900	N/F/E/B flute
Collapsible boxes	250-900	N/F/E/B flute
Double-wall cartons	250-900	N/F/E/B flute

Space requirements (Version A/B/C/CC/D)		
Length	16.2 m/18 m/19 m/20.6 m/24.2 m (53 ft 2 in/59 ft 1 in/62 ft 4 in/67 ft 7 in/79 ft 5 in)	
Width	2.2 m/2.2 m/2.75 m/2.75 m/2.75 m (7 ft 3 in/7 ft 3 in/9 ft 0 in/9 ft 0 in/9 ft 0 in)	
Installed power	50 kVA/50 kVA/55 kVA/55 kVA/55 kVA	

Technical data for Version D on request.

Folding Carton Models

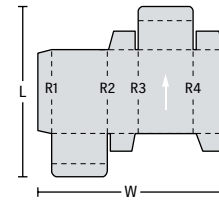
Diana X 80

1. Straightline folding cartons

W	75–800 mm (2.95–31.50 in)
Optional	45*–800 mm (1.77–31.50 in)
L (max.)	900 mm (35.43 in)

Machine speed	500 m/min (1,640 ft 5 in/min.)
Optional	650 m/min (2,132 ft 7 in/min.)

* with miniature carton attachment

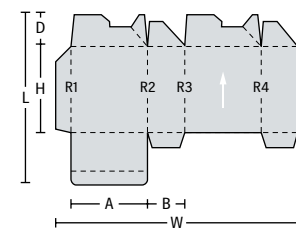


2. Lockbottom cartons

W	146*–800 mm (5.75–31.50 in)
L (max.)	1,100 mm (43.31 in)
D	30–200 mm (1.18–7.87 in)
H (min.)	50 mm (1.97 in)

A (min.)	40 mm/1.57 in (35 mm/1.38 in)
B (min.)	30 mm/1.18 in (35 mm/1.38 in)
Output (max.)	50,000 pcs/h

* with miniature lockbottom unit

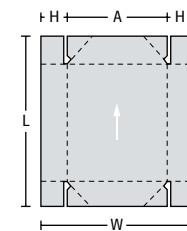


3. 4-corner collapsible boxes

W	120–800 mm (4.72–31.50 in)
L	110–1,100 mm (4.33–43.31 in)
A	80–556 mm (3.15–21.89 in)

H	20–200 mm (0.79–7.87 in) *20–100 mm (0.79–3.94 in)
Output (max.)	40,000 pcs/h *45,000 pcs/h

* 3-angle backfolding hook option

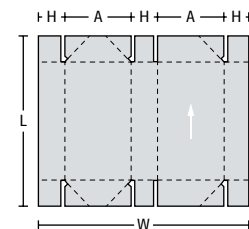


4. 6-corner collapsible boxes

W	270–800 mm (10.63–31.50 in)
L	130–830 mm (5.12–32.68 in)
A (min.)	90 mm (3.54 in)

H	30–115 mm (1.18–4.53 in) *30–100 mm (1.18–3.94 in)
Output (max.)	35,000 pcs/h *40,000 pcs/h

* 3-angle backfolding hook option



5. Double-wall cartons

F	90–556 mm (3.54–21.89 in)
L	120–900 mm (4.72–35.43 in)
Z (min.)	105 mm (4.13 in)

W (max.)	800 mm (31.50 in)
E (min.)	15 mm (0.59 in)
Machine speed	300 m/min* (984 ft 3 in/min.)

* with disc-type upper gluing unit

